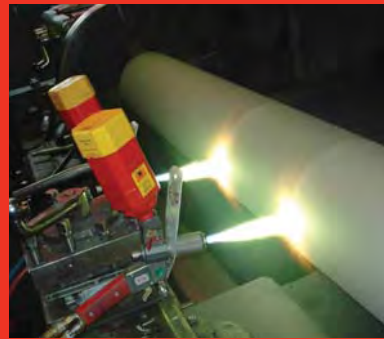
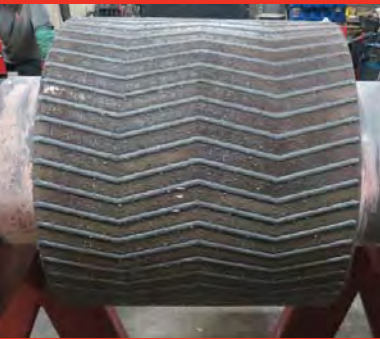
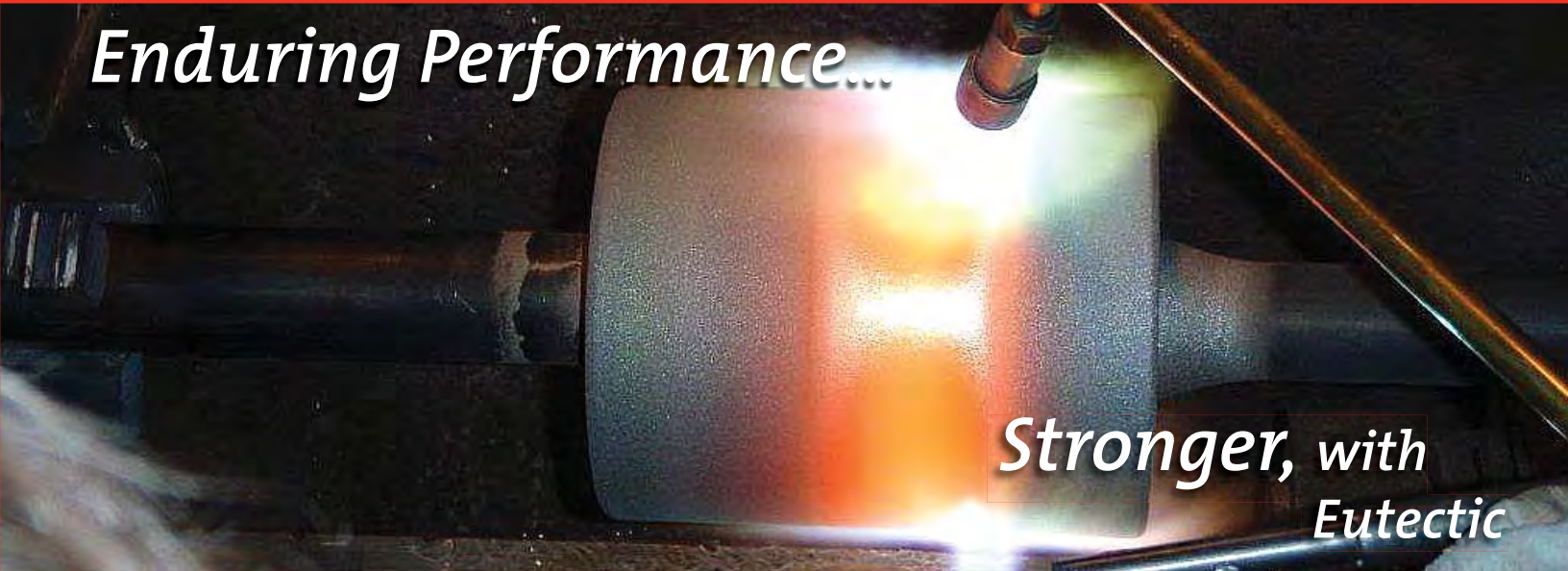


Anti-Wear Solutions

Wear Resistant Coatings for New and Worn Rolls

Enduring Performance...

*Stronger, with
Eutectic*



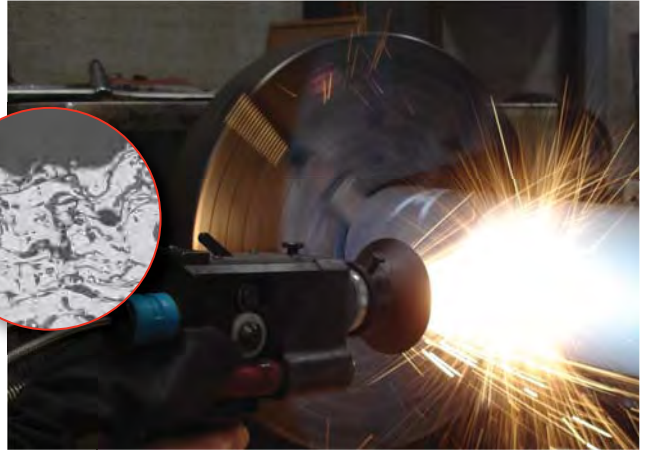
- Experts in wear preventive coatings for rolls
- Refurbishment and OEM manufacturing
- Specialized workshops
- Wearfacing alloy specialist now offers turn-key solutions
- Extend life, increase productivity and save money

**Castolin Eutectic®
Eutectic Castolin**

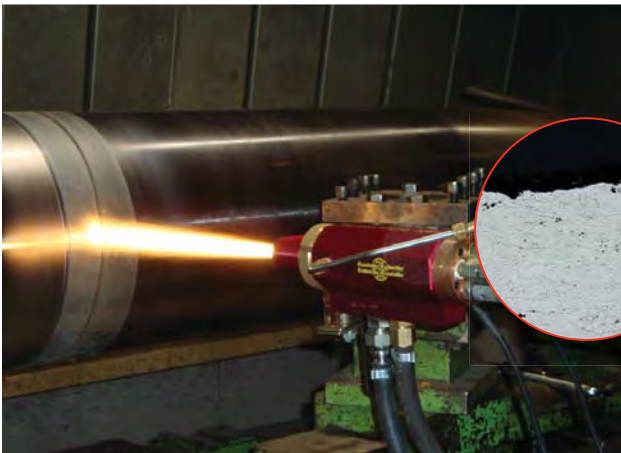
Increase Your Roll Service Life with Superior Wearfacing Technologies



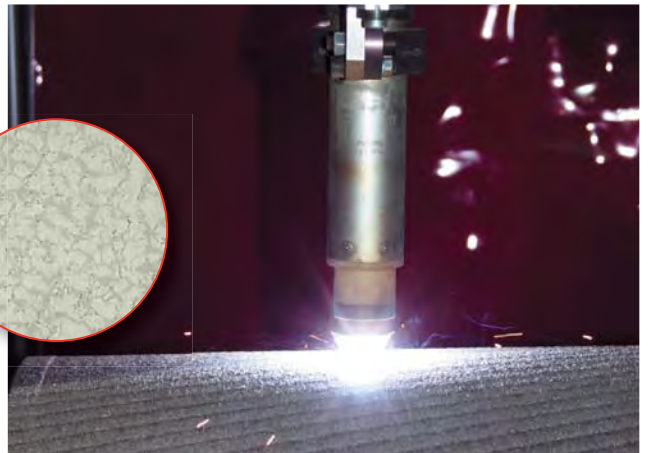
Spray and Fuse Process
(TeroDyn® and SuperJet®)



Cold Spray Process
(EuTronic® Arc Spray, TeroDyn® and CastoDyn®)



High Velocity Oxy-Fuel Powder Spraying
(CastoJet® Kerosene 5)



Plasma Transferred Arc (PTA)
(EuTronic® GAP®)



Automated Welding with Shielding Gas
(EnDOtec®)



Automated Open-Arc Welding
(TeroMatec®)

World Leader in Advanced Alloy Development Now Offers Turn-Key Solutions

- Wide range of wearfacing alloys from the experts
- World leader in Wear & Fusion technologies
- Fully equipped workshop with latest technologies
- Extreme quality control procedures



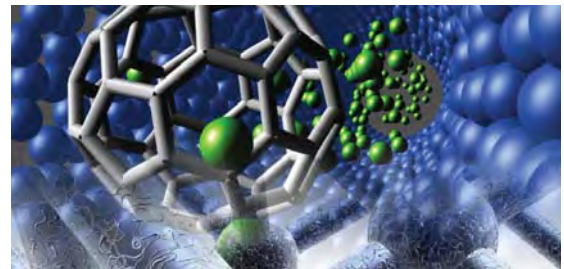
Extensive on-site wear analysis



Strong international R&D facilities



Lab testing to define wear resistance



Development of new, cutting edge technologies

Eutectic Services Workshop Case Studies

Straightener Rolls - Steel Industry

PART: Continuous Caster Straightener Rolls

WEAR PROBLEM: High abrasion at high temperature (2400°F-2600°F) as red hot steel strand moves along the Continuous Caster Straightener Rolls.

TYPICAL SOLUTION: 400 series sub arc alloys

ADVANCED SOLUTION: Rebuild or fabricate and coat a roll using Eutectic's proprietary EnDOtec® flux cored wire.

RESULTS: EnDOtec maintains high hardness even at high temperatures. **This solution is proven to extend roll life up to 8 times!**



Strand showing straightener rolls



Worn straightener roll



Roll as welded



Finished and machined

VRM Crusher Rolls - Cement Industry

PART: Vertical Roller Mill Crusher Rolls

WEAR PROBLEM: The production of cement often leads to extreme wear from crushing aggregate.

TYPICAL SOLUTION: Roll replacement

ADVANCED SOLUTION: Rebuild rolls with complex carbide wearfacing wire and a final layer of our NanoAlloy®.

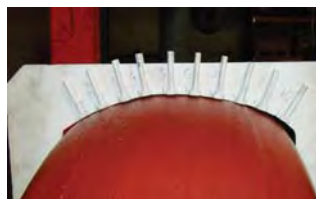
RESULTS: TeroMatec alloy's ultra-fine carbides resist combined abrasion, impact and compressive wear. **This solution is proven to extend roll life up to 4 times!**



Worn rolls



Material loss caused by abrasion



Dimensional rebuilding



Rolls ready for service

On-Site Services: *The Reliability Experts*



Whertec is the on-site service division of Castolin Eutectic. The division offers a highly organized inspection, mobilization, welding and thermal spray service covering a wide range of industrial applications. Every job is covered by a pre- and post-project report that can be used to assess future preventative maintenance requirements and evaluate in-service performance of key component parts. Whertec operates with stringent health and safety standards and has established a reputation for efficiency and reliability.

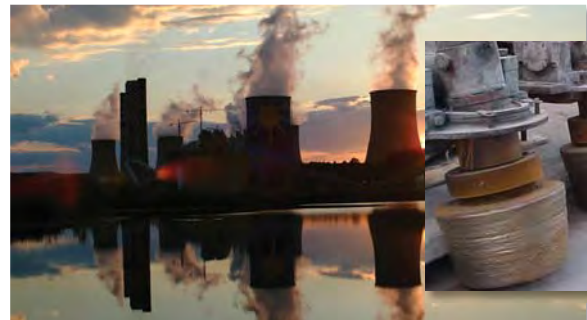
The combination of Castolin Eutectic's product and application expertise with a world-class site mobilization team offers customers the best possible solution for on-site projects – test the reliability experts with your demanding repair or material conservation projects.



Typical Industries Served using Eutectic Solutions...



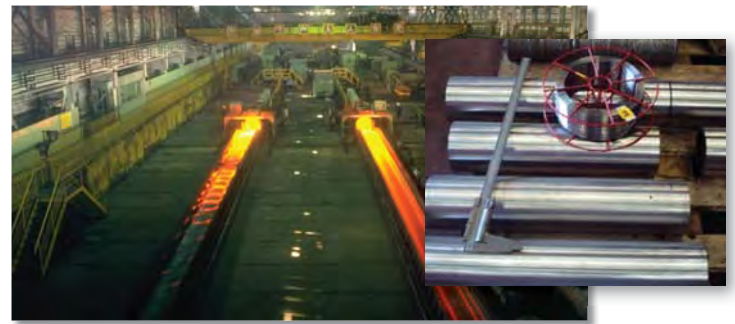
Oil & Gas



Power Generation



Cement



Steel

YOUR RESOURCE FOR PROTECTION, REPAIR AND JOINING SOLUTIONS



Eutectic Corporation
N94 W14355 Garwin Mace Drive
Menomonee Falls, WI 53051 USA
P 800-558-8524 • F 262-255-5542
www.eutectic.com

Eutectic Services
12300 Carmen Avenue
Milwaukee, WI 53225 USA
P 800-558-8524 • F 262-255-5542

Whertec Technology Center
5409 Highway Avenue
Jacksonville, FL 32254 USA
P 866-207-6503 • F 904-213-8126
www.whertec.com



Statement of Liability: Due to variations inherent in specific applications, the technical information contained herein, including any information as to suggested product applications or results, is presented without representation or warranty, expressed or implied. Without limitation, there are no warranties of merchantability or of fitness for a particular purpose. Each process and application must be fully evaluated by the user in all respects, including suitability, compliance with applicable law and non-infringement of the rights of others, and Eutectic Corporation and its affiliates shall have no liability in respect thereof.

ROLLS 1-15 © 2008, Eutectic Corporation, ® Reg. T.M., Printed in the U.S.A.