

CastoDur Diamond Plates
Active protection against impact and mild abrasion

CDP 4623i



- Offers the best protection against combined wear by impact and mild abrasion
- Resists impact where standard wearplates fail
- Improves service life of parts such as buckets, chutes, conveyors and any other element exposed to strong impacts

WEAR PLATES



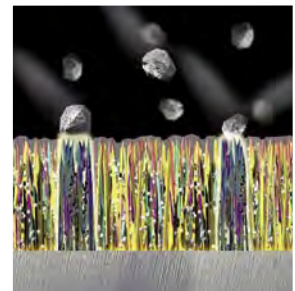


Castolin Eutectic, your best partner to reduce maintenance costs

With more than 100 years experience in welding and wear protection, Castolin Eutectic is the manufacturer of the widest range of wearplates today on the market, in terms of base materials, sizes, coating alloys and welding processes adopted. From simple Chromium Carbide rich overlays, applied in open arc, to sophisticated NiCrBSi powders additioned with Tungsten Carbides and fused in a vacuum furnace or by means of Plasma Transferred Arc, we have developed a wide choice of products.

You deserve the best plates, we manufacture them

The Castolin Eutectic manufacturing accuracy, the specific welding procedure and equipment promote a better orientation of hard phases within the alloy during solidification, ensuring an additional protection of the surface and a stronger bonding between carbides and matrix.



CDP 4623i

CDP 4623i is the High Load impact wearplate. The tough martensitic matrix contains complex carbides that are finely and homogeneously dispersed. This specific crystallographic structure allows the CDP 4623i to withstand extreme conditions of impacts even when mild abrasion is present. This product is suitable for chutes, buckets, crushers and any other application with impacts.



- Dimensions:** 1.500 x 3.000mm (1.220 x 2.740mm coated, 3,34 m²)
- Base material:** mild steel
- Type of wearfacing:** chromium carbide, titanium carbide
- Hardness of the weld clad surface:** 54 HRC
- Max operating temperature:** 300°C

Available versions (other sizes available on request)

4623i Coated on one side with a single layer of wearfacing alloy:

	Base material (mm)	Wearfacing (mm)
CDP 4623i 0804	8	4
CDP 4623i 1005	10	5

Always close to you

On field experience clearly shows that every application requires a tailor made solution, let our representatives advise you about the CDP that fits the best your needs and suggest the best procedures for cutting, bending, joining and fixing wearplates.

Your resource for protection, repair and joining solutions

Statement of Liability: Due to variations inherent in specific applications, the technical information contained herein, including any information as to suggested product applications or results, is presented without representation or warranty, expressed or implied. Without limitation, there are no warranties of merchantability or of fitness for a particular purpose. Each process and application must be fully evaluated by the user in all respects, including suitability, compliance with applicable law and non-infringement of the rights of others, and Messer Eutectic Castolin and its affiliates shall have no liability in respect thereof.