



MeCaTeC[®]

Ceramic Polymer Coatings

Protection against Chemical Attack, Corrosion,
Impact and Abrasion



- Long term surface protection for critical industrial assets
- Easy to apply by trowel, brush, airless spray or MeCaSpray Dispenser
- Environmentally sustainable and safe coatings
- Solvent-free and zero VOCs
- Repair • Rebuild • Protect



The Company and Products you Trust

Elevate your manufacturing operations with Castolin Eutectic Products
- trusted choice of millions in wear intensive industries for over 115 years.

Through our products and services, we're committed to extending equipment life, reducing maintenance expenses, and enhancing your industrial productivity. Our innovative wear protection solutions will provide surface protection, restoration and re-engineering that will have a transformative impact on the longevity of your operating equipment.



The **3R+1** Initiative

The 3R Initiative promotes the 3 R's (Reduce, Reuse and Recycle) globally, through the effective use of resources and materials. We make it easy for industry to move towards long term resilience by adopting a 4th principle **REPAIR**.

Global Presence and Local Outreach to Support Your Operation

Our strategically located Service Centers offer you a local presence, while our expertise extends globally. This enables us to pool our resources and knowledge from around the world to solve challenging industrial wear problems. We work side by side with our customers to implement the most cost-effective solutions to optimize equipment performance, reliability, and safety.





MeCaTeC Ceramic Surfacing Polymers

Castolin Eutectic is at the forefront of pioneering sustainable, environmentally friendly solvent-free protective coatings, with lasting performance, durability, and near zero carbon emissions.

The MeCaTeC line of ceramic polymer coatings from Castolin Eutectic are meticulously engineered to provide the perfect combination of affordability, application ease and safety performance.

We offer the most advanced surfacing technologies to address the toughest wear and corrosion protection problems faced by industrial facilities.

MeCaTeC Quick Selection Guide

SERVICE TYPE	REPAIR	WEAR	IMMERSION / CORROSION
Fast Cure	100 144	A5FS	750
Machinable	120 125		
Bonding Adhesive	100 120 130		
Easy to Clean		306	710
Impact	144	400	
High Temperature	125	A5HT A7HT 350 450	780 750 736
Abrasion	125 130	A5 A5HT A5FS 306 350 400 450 A7 A7HT	710 750
Concrete			10 706 736
FDA 21CFR175.300		A7	706

The Industries We Serve



Mining



Power



Steel



Cement



Agricultural



Recycling



Oil & Refinery



Pulp & Paper

MeCaFix - Repair and Rebuild

Patch and Go Repair Compounds

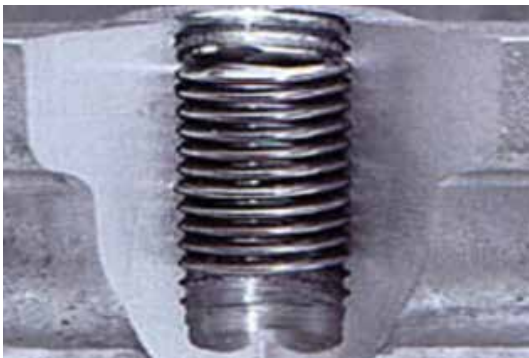
The MeCaFix line of products is formulated for a wide range of applications, including rebuilding, resurfacing, bonding, and quick repairs across various industries. Whether you need to perform live repairs, patch metal, resurface metal loss, or repair concrete and rubber, MeCaFix has you covered.

One of the standout features of MeCaFix compounds is their cold-curing capability, which eliminates the need for hot work welding and post-heat treatment. This not only simplifies the repair process but also significantly reduces downtime, making MeCaFix an ideal choice for rapid maintenance solutions.

Make MeCaFix your go-to repair product for efficient, reliable, and versatile maintenance solutions in your industry.

MeCaFix 50

General purpose steel-reinforced epoxy maintenance and repair kit. Fully cures in 10 minutes, economical and easy to use.



APPLICATIONS

- Thread Repair
- Pipe Repair
- Tank Repair
- Form Tools and Handles

KEY BENEFITS

- Hand-mixable, steel-reinforced, non-rusting epoxy putty
- Quickly repairs or rebuilds anything made of steel
- No measuring or mixing tools are required
- As easy as modeling clay with a consistency that facilitates adhesion to the substrate
- NSF 61 approved for potable water



SIZE | 18 tubes per kit

MeCaFix - Repair and Rebuild

MeCaFix 100 Express

Fast setting, 3-minute metal filled emergency repair polymer. Ready to sand in under 1 hour.



APPLICATIONS

- Piping
- Threads
- Resurfacing Metal Loss
- Cold Bonding Adhesive
- Leaks
- Wood Repair
- Castings

KEY BENEFITS

- Extremely fast dry-to-touch time
- Low temperature cure
- Excellent adhesive properties
- Suitable for live repair of active leaks
- Go to repair product for rapid maintenance repairs



SIZE | 0.025 L / 0.01 gal / 0.037 kg / 0.1 lb Syringe | 0.17 L / 0.04 gal / 250 g (0.25 kg) / 0.55 lb Kit

MeCaFix 120

Cures at temperatures down to 32°F (0°C). Protects against wear by corrosive liquids, abrasive media, slurry erosion and cavitation.



APPLICATIONS

- Butterfly and Gate Valves
- Tube Sheets
- Propellers
- Resurfacing Metal Loss
- Pump Housings and Impellers
- Scored Hydraulic Rams
- Cracked Casings

KEY BENEFITS

- Low temperature cure
- Excellent adhesive properties
- Excellent sag resistance for thick applications
- Designed to be precision machined with low defects
- Exceptional resistance to pressure and deformation



SIZE | 0.40 L / 0.11 gal / 1.0 kg / 2.2 lb Kit

MeCaFix - Repair and Rebuild

MeCaFix 125

High temperature metallic repair compound. Great for pump repairs in chemical service and sag resistant for use in any position. Proven performer in elevated temperature hydrocarbon service.



APPLICATIONS

- Butterfly and Gate Valves
- Tube Sheets
- Propellers
- Resurfacing Metal Loss
- Pump Housings and Impellers
- Scored Hydraulic Rams
- Cracked Casings

KEY BENEFITS

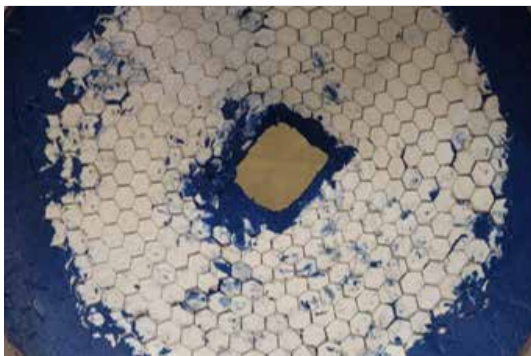
- Excellent chemical resistance
- High temperature resistance
- Superb sag resistance
- Designed to be precision machined with low defects
- Easy-of-use in any position



SIZE | 0.5 L / 0.13 gal / 1 kg / 2.2 lb Kit

MeCaFix 130

Versatile stand-alone ceramic rebuild compound or use as a wear tile embedment adhesive and overlay grout. Resurface worn equipment exposed to abrasion, corrosion, cavitation, and industrial chemicals.



APPLICATIONS

- Cracked Casings
- Pump Housings
- Resurfacing Metal Loss
- Chutes
- Tube Sheet Repair
- Ceramic Tile Adhesive/Grout
- Butterfly Gate Valve Repairs
- Hoppers

KEY BENEFITS

- Hard, tough, durable film
- Outstanding adhesion
- Non sag
- Supports overhead tile installation
- One coat high build protection
- Extreme abrasion protection
- Broad chemical resistance



SIZE | 0.8 L / 0.2 gal / 1.5 kg / 3.3 lb Kit | 7.2 L / 1.9 gal / 14.5 kg / 32 lb Kit

MeCaFix - Repair and Rebuild

MeCaFix 140

Concrete resurfacing and repair compound. The polymer matrix is reinforced with aggregate and Kevlar® to strengthen the composite matrix. The technology is moisture tolerant and imparts excellent adhesion to cold and damp concrete.



APPLICATIONS

- Concrete Resurfacer
- Cove Builder
- Concrete Repair
- Bonding Adhesive

KEY BENEFITS

- Low temperature cure
- Excellent adhesion to concrete
- Easy to use mixing ratio 1:1
- Suitable for damp and wet service
- Kevlar reinforced composite repair



SIZE | 1.5 L / 0.4 gal / 3 kg / 6.6 lb Kit | 24 L / 16 gal / 47 kg / 103.4 lb Kit

MeCaFix 144

Fast setting polyurethane coating provides rubber-like protection for wear surfaces. Supplied in a dual cartridge kit and dispensed using the MeCaSpray coating system.



APPLICATIONS

- Roller Coating
- Fill In Caulking
- Off Road Protection
- Cast Parts
- Chute Protection
- Hopper Lining
- Geotextile Reinforcement
- Repair Expansion Joints
- Conveyor Belt Repair

KEY BENEFITS

- Low temperature cure
- Excellent adhesive properties
- Excellent sag resistance for thick applications
- Good chemical resistance
- Exceptional return to service time



SIZE | 1500 ml / 0.39 gal / 1.75 kg / 3.85 lb Cartridge Tube - MeCaPrime 14 priming solution is included 50 ml / 50 g

Chemical Resistant Coatings

The MeCaCorr line of products is engineered to provide exceptional corrosion resistance and durability in immersion service across a wide range of industries, ensuring long-lasting protection for your assets.

One of the primary factors affecting corrosion protection is the adhesion of the coating to the substrate. MeCaCorr compounds incorporate advanced adhesion promoters that significantly increase bond strength, achieving pull-off adhesion values greater than 3500 psi. This robust adhesion ensures that the coating remains firmly attached, even under extreme conditions, preventing delamination and subsequent corrosion.

Corrosion resistance is also heavily dependent on the barrier properties of the coating. MeCaCorr formulations utilize proprietary ceramic particles that create a highly effective barrier, limiting the path of diffusion for corrosive species. This barrier protection is crucial in immersion service, where continuous exposure to water and chemicals can rapidly degrade unprotected surfaces.

MeCaCorr is your preferred choice for reliable, long-lasting corrosion protection in immersion service. Experience the benefits of advanced ceramic epoxy technology in safeguarding your valuable assets.

MeCaCorr 706

Designed to provide wear protection and chemical resistance in wastewater service. 706 is also well suited for coating concrete surfaces.



APPLICATIONS

- Concrete Coating
- Storage Tank Lining
- Pump Housings
- Chutes
- Valves
- Hoppers
- Process Equipment
- Resurfacing Metal Loss

KEY BENEFITS

- Protects surfaces from chemical attack and corrosion, suitable for a variety of substrates
- Designed for immersion service
- Conforms to FDA 21 CFR (FDA) 175.300 food contact service
- Cures under cold and damp conditions
- Economical and easy to use



Larger volume packaging for plural component spray is available

SIZE | 1500 ml / 0.4 gal / 2.0 kg / 4.3 lb Cartridge Tube | 15 L / 4.0 gal / 19.8 kg / 43.6 lb Kit

MeCaCorr Corrosion Protection

MeCaCorr 710

High performance multi-functional polymer coating designed for immersion service with exceptional resistance to warm water service up to 150°F (65°C).



APPLICATIONS

- Heat Exchangers
- Tube Sheet / Water Box
- Pipelining
- Storage Tanks
- Turbines
- Waste Water
- Sea Water
- Hydrocarbon Storage

KEY BENEFITS

- Economical and easy to use for industrial corrosion protection
- Designed for warm water immersion service
- Versatile, suitable for a variety of substrates
- Application versatility - brush, MeCaSpray & plural component pump



SIZE | 1125 ml / 0.3 gal / 1.8 kg / 3.9 lb Cartridge Tube | 1 L / 0.264 gal / 1.5 kg / 3.3 lb Kit | 4.8 L / 1.3 gal / 7.5 kg / 16.5 lb Kit | 44.7 L / 11.8 gal / 70.5 kg / 155.1 lb Kit

MeCaCorr 736

High-performance cross-linked glass flake polymer coating designed to achieve maximum chemical resistance for the restoration of metallic and concrete containment systems. Offers good UV stability verses traditional secondary containment linings.



APPLICATIONS

- Concrete Tanks
- Clarifiers
- Flooring
- Basins
- Thickener Tanks
- Piping
- Secondary Contaminant

KEY BENEFITS

- Glass flake modified to achieve maximum corrosion resistance
- Resistant to caustic chemicals including crude oil, waste water and sulfuric acid service
- Fast cure and return to service
- Application versatility - brush, single leg airless spray & plural component pump for maximum production throughput

Larger volume packaging for plural component spray is available

SIZE | 1125 ml / 0.3 gal / 1.6 kg / 3.55 lb Cartridge Tube | 15 L / 4 gal / 21.8 kg / 48 lb Kit



MeCaCorr 750

Engineered for the restoration and protection of metallic surfaces subjected to harsh corrosion and chemical attack, including crude oil and sulphuric acid service.



APPLICATIONS

- Penstock Lining
- Pipe Coating
- Petroleum Tanks
- Chemical Tanks
- Heat Exchangers

KEY BENEFITS

- Glass flake modified
- Excellent chemical resistance
- Outstanding performance in acid service
- Fast cure and return to service
- Application versatility - brush, single component airless pump & plural component pump for maximum production throughput



Larger volume packaging for plural component spray is available

SIZE | 1125 ml / 0.3 gal / 1.7 kg / 3.8 lb Cartridge Tube | 1 L / 0.3 gal / 1.5 kg / 3.4 lb Kit | 4.9 L / 1.3 gal / 7.5 kg / 16.50 lb Kit | 43.8 L / 11.6 gal / 67.5 kg / 148.50 lb Kit

MeCaCorr 780

Unique ceramic hybrid epoxy coating that provides maximum corrosion protection, at high temperatures, in immersion service.



APPLICATIONS

- Tank Lining
- Scrubbers
- Pipe Lining
- Immersion Heater
- Stack Lining
- Heat Exchanger
- Amine Vessel
- Autoclave

KEY BENEFITS

- Highest temperature resistant polymer coating
- Outstanding corrosion protection and excellent under rapid decompression service
- Resistant to steam out
- Spray application with single coat coverage



SIZE | 940 ml / 0.25 gal / 1.8 kg / 4.0 lb Cartridge Tube | 1.0 L / 0.3 gal / 1.9 kg / 4.3 lb Kit | 5.0 L / 1.3 gal / 9.7 kg / 21.3 lb Kit | 12.2 L / 3.2 gal / 23.5 kg / 51.6 lb Kit | 54.5 L / 14.4 gal / 105.4 kg / 231.8 lb Kit

MeCaCorr 850

High temperature siliconized copolymer designed for coating surfaces at temperatures as high as 1200°F (650°C). It protects surfaces exposed to thermal shock, high temperature oxidation and thermal cycling from intermittent wet and dry conditions.



APPLICATIONS

- Kiln Shell
- Solar Absorber
- Piping System
- Exhaust System
- Firetubes
- Stacks
- Muffler System
- Chimney
- Heater Treaters
- Valves
- Stainless Steel
- Boilers

KEY BENEFITS

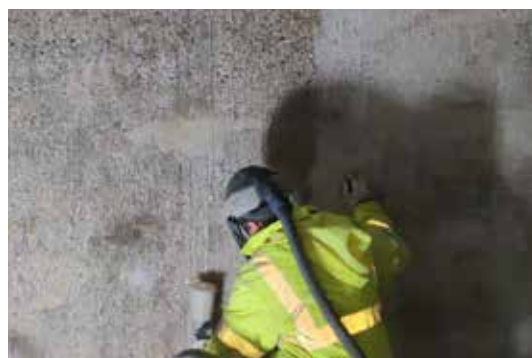
- Heat tolerant 1200°F (650°C) corrosion resistant coating
- Meets NACE SP0198 - Control of Corrosion under Thermal Insulation and Fireproofing Materials
- Self priming and self curing - no post heat curing required
- Formulated for uninsulated or under insulated surfaces



SIZE | 3.4 L / 0.9 gal / 6.4 kg / 14.1 lb Kit

MeCaPrime 10

A fiber reinforced sealer and primer designed to promote excellent adhesion to cold and damp concrete. Having excellent chemical resistance properties, it is also suitable as a base layer for chemical immersion service.



APPLICATIONS

- Concrete Primer
- Steel Primer
- Penetrating Sealer
- Bonding Adhesive

KEY BENEFITS

- Suitable as a primer for MeCaCorr chemical resistant linings
- Resists amine blushing even when cured at cold temperatures or high humidity
- Penetrates even cold and damp concrete
- Optical fluorescing pigment provides visual inspection to ensure good film coverage



SIZE | 2.5 kg / 0.6 gallon / 5.5 lb Kit

Abrasion and Erosion Resistant

The MeCaWear line of products is specifically designed to offer superior protection against abrasion, erosion, and cavitation, making them ideal for use in demanding industrial environments. These products create a sacrificial surface that absorbs the wear and tear, thereby protecting the underlying material and extending the lifespan of your equipment.

MeCaWear products provide a sacrificial layer that takes the brunt of abrasive forces. This means that the coating itself wears away over time, rather than the underlying substrate. This sacrificial mechanism is crucial in high-wear environments, as it helps to preserve the integrity of the original material.

MeCaWear compounds are cold-curing, meaning they do not require heat to set. This makes them easy to apply in a variety of settings, including those where heat application is impractical or could damage the substrate. Cold surfacing also ensures that the integrity of the part being coated is maintained, as there is no risk of heat-induced warping or weakening.

MeCaWear is your go-to solution for abrasion, erosion, and cavitation resistance. Experience the benefits of a ceramic loaded polymer that will protect surfaces from abrasion.

MeCaWear A5

Trowel-grade coating to rebuild, repair and restore equipment. Contains a high volume of platy alumina and silicon carbide particles that are reinforced with Kevlar® fibers for exceptional resistance to abrasion and erosion wear.



APPLICATIONS

- Repair and Replace Ceramic Tile
- Coal Pulverizers and Exhausters
- Pipe Elbows, Chutes
- Slurry Pumps and Screw Conveyors
- Ash Handling Pipes and Valves

KEY BENEFITS

- Economical and easy to use trowel-grade wear protection
- Sag resistant for high film build-up
- Great for odd shapes or to create wear pads
- Surface finish is semi rough and easily topcoated with MeCaWear 306 for a smooth finish
- Composed of large angular alumina carbides reinforced with Kevlar® fibers



SIZE | 1 L / 0.3 gal / 2.5 kg / 5.5 lb Kit | 4 L / 1.1 gal / 9.5 kg / 20.9 lb Kit | 6.8 L / 1.8 gal / 16 kg / 35.2 lb. Kit

MeCaWear - Wear Protection

MeCaWear A5HT

Protect working surfaces at high heat against wear in severe erosion and abrasion environments with this high temperature version of MeCaWear A5.



APPLICATIONS

- Repair & Replace Ceramic Tile
- Pipe Elbows, Chutes
- Coal Pulverizers and Exhausters
- Pump Housings, Impellers
- Slurry Pumps and Screw Conveyors

KEY BENEFITS

- High temperature version of MeCaWear A5
- Economical and easy to use trowel-grade wear protection
- Sag resistant for high film build-up
- Great for odd shapes or to create wear pads
- Surface finish is semi rough and easily topcoated with MeCaWear 350 for a smooth finish



SIZE | 1 L / 0.3 gal / 2.5 kg / 5.4 lb Kit | 3.9 L / 1 gal / 9.5 kg / 20.9 lb Kit

MeCaWear A5FS

Get back up and running quickly with this fast-setting version of MeCaWear A5. Engineered for cold weather applications. Cure-to-touch in 30 minutes. Handle in 1 hour.



APPLICATIONS

- Pipe Elbows
- Screw Conveyors
- Ceramic Tile Repair
- Ash Handling Pipe
- Slurry Pumps and Screw Conveyors
- Coal Pulverizers and Exhausters

KEY BENEFITS

- | | |
|--|--|
| • Fast setting version of MeCaWear A5 | Cure - Touch: 30 min. (77°F / 25°C) |
| • Sag resistant for high film build-up | Cure - Handle: 1 hr. (77°F / 25°C) |
| • Great for overhead applications | Cure - Service: 2 hrs. (temperature dependent) |
| • Will cure down to 35°F / 2°C | |



SIZE | 8 L / 2.08 gal / 20 kg / 44 lb (Bulk package 8 x 2.5 kg) Kit

MeCaWear A7

High performance trowel-grade coating with fine spherical beads, designed for repairs of less than ¼" thick. Pliable by hand for easy contouring and shaping of worn parts.



KEY BENEFITS

- A fine spherical ceramic beaded composite coating that is used when a thinner film or smoother finish is desired
- Meets Regulation 21 CFR (FDA) 175.300 for indirect food contact
- Allows for improved pliability when design tolerances and contouring is important

APPLICATIONS

- Pipe Elbows, Chutes
- Ceramic Tile Repair
- Filter Screens
- Pulverizers
- Slurry Pumps / Screw Conveyors



SIZE | 0.7 L / 0.17 gal / 1.5 kg / 3.3 lb Kit | 5.6 L / 1.48 gal / 12.5 kg / 27.5 lb Kit

MeCaWear A7HT

Protect working surfaces at high heat against wear in severe erosion and abrasion environments with this high temperature version of MeCaWear A7.



KEY BENEFITS

- High temperature version of MeCaWear A7
- A fine spherical ceramic beaded composite coating that is used when a thinner film or smoother finish is desired
- Allows for improved pliability when design tolerances and contouring is important

APPLICATIONS

- Pipe Elbows
- Screw Conveyors
- Pulverizers
- Ash Handling Pipe
- Ceramic Tile Repair
- Flue Dust
- Slurry Pumps
- Chutes



SIZE | 0.64 L / 0.17 gal / 1.5 kg / 3.3 lb Kit | 5.3 L / 1.4 gal / 12.5 Kg / 27.5 lb Kit

MeCaWear - Wear Protection

MeCaWear 306

Novolac epoxy SiC ceramic polymer coating. Formulated to provide a low friction surface that protects against wear by extreme sliding, fine slurry, erosion and corrosion.



APPLICATIONS

- Augers/Screws
- Pump Casings
- Storage Tanks
- Pipe Lining and Coating
- Chutes
- Bins
- Hoppers
- Floors
- Trenches
- Troughs
- Cyclones
- Fan Blades

KEY BENEFITS

- Suitable as a liner for continuous immersion service up to 122°F /50°C
- Surface-clean technology for improved slip and cleanability
- Paint-on or spray-on application
- Versatile and tough, ideal for overcoating another MeCaTeC product



Larger volume packaging for plural component spray is available

SIZE | 840 ml / 0.22 gal. / 1.2 kg / 2.6 lb Kit | 1500 ml / 0.4 gal / 2.0 kg / 4.5 lb Cartridge Tube | 15 liter / 4 gal. / 21.3 kg / 46.9 lb Kit

MeCaWear 350

High temperature version of MeCaWear 306, for maximum abrasion and erosion protection in harsh environments at elevated temperatures.



APPLICATIONS

- Baghouse / Duct Work
- Wear Liners
- Air Heater
- Cyclones
- Pulverizers
- Fly Ash Separators
- Chutes
- Scrubbers

KEY BENEFITS

- Ultra high temperature resistance
- Reinforced with silicon carbide
- Good film and release properties
- Applied by brush or MeCaSpray dispenser
- Resistant to steam out



SIZE | 940 ml / 0.2 gal / 1.7 kg / 3.7 lb Cartridge Tube | 1 L / 0.3 gal / 1.8 kg / 3.9 lb Kit | 5.0 L / 1.3 gal / 8.9 kg / 19.5 lb Kit | 85.2 L / 22.5 gal / 150.3 kg / 330.6 lb Kit

MeCaWear - Wear Protection

MeCaWear 400

Trowel-grade, high build-up coating used to protect working surfaces against wear in severe erosion and abrasion environments. Modified with elastomeric toughening technology to improve crack and impact resistance.



KEY BENEFITS

- Highest impact resistance polymer
- Loaded with treated angular and ceramic alumina beads
- Reinforced with Kevlar®
- Excellent alternative to ceramic tile

APPLICATIONS

- Slurry Tank Bottoms
- Coal Pulverizers and Exhausters
- Pump Housings, Impellers
- Screw Conveyors
- Pipe Elbows, Chutes For Clinker, Cement & Sand



SIZE | 1.8 L / 0.5 gal / 4.8 kg / 10.5 lb Kit | 7.6 L / 2 gal / 20 kg / 44 lb Kit

MeCaWear 450

Ultra high temperature wear compound, for maximum abrasion protection in harsh environments.



APPLICATIONS

- Baghouse
- Duct Work
- Pump Lining
- Elbows
- Fan Blades

KEY BENEFITS

- Ultra high temperature
- Excellent alternative to ceramic tile for high temperature service
- High surface hardness
- Loaded with treated angular and ceramic alumina beads
- Reinforced with Kevlar®



SIZE | 1.9 L / 0.5 gal / 5.3 kg / 11.6 lb Kit | 7.2 L / 1.9 gal / 20 kg / 43.9 lb Kit

MeCaWrap - Pipe Protection

MeCaWrap - W4

MeCaWrap-W4 rapid repair kit is designed for quick in-field leak repairs on virtually all types of piping configurations; straight pipe, elbows, tees and more.



APPLICATIONS

- Leak Stop
- Pipe Repair
- Crack Repair
- Underwater Repair

KEY BENEFITS

- Rapid repair of pipe leaks and cracks in minutes
- Designed for pipe diameters from 0.5" to 20"
- Stop leaks/remains in service/minimize downtime
- Use above and below ground and underwater
- Provides dielectric and abrasion protection



SIZE | one 4"x 15' water activated wrap / one 3.5" MeCaFix 50 epoxy putty repair stick | one 6"x 30' water activated wrap / one 3.5" MeCaFix 50 epoxy putty repair stick

MeCaWrap - K6

MeCaWrap-K6 was designed for quick in-field repairs of piping systems and industrial assets due to internal or external abrasion damage. K6 may be topcoated with MeCaWear for additional abrasion protection.



APPLICATIONS

- Pipeline Protection
- Wear Pipe and Elbow Repair
- Mechanical Protection
- Directional Drill Abrasion Overcoat

KEY BENEFITS

- Fast curing cast-like material - complete cure in 30 min. at 70°F / 21°C
- Adds long lasting mechanical strength to thinning pipe walls
- Open knit design aids in the application of a topcoat of other MeCaWear compounds
- Easy to apply insitu-fix for most pipe repairs



SIZE | 5 rolls of 6"x 30' water activated wrap per kit

MeCaBack Crusher Backing Compound

MeCaBack 900

Pourable crusher backing compound that eliminates wear liner gaps and voids and improves the operational performance of the entire crusher system.



SIZE | 2 gal / 7.6 L / 12.9 kg / 28.4 lb Kit

APPLICATIONS

- Cone Crusher
- Gyratory Crusher
- Grinding Mills
- Backing Plates
- Machine Bedding
- Grouting

KEY BENEFITS

- Optimum compression strength
- Uniform consistency and pourability
- Minimal shrinkage
- Smooth alignment errors
- Solvent-free & low odor

Turnkey Solution for Mining Crusher Liners

Combine MeCaBack Backing Compound with Castolin Eutectic CDP® Wear Liners for increased service life. Engineered to customer specifications, and available in a selection of abrasion and impact resistant alloys, our liner wear solution will increase your overall crusher equipment performance.



Equipment

MeCaSpray Dispenser

MeCaSpray is available in pneumatic and manual versions. This cartridge spray system for the MeCaTeC line of polymer coatings is self-contained, portable, lightweight and easy to use.



- FEATURES
- Lightweight Design
 - Dual Stage Trigger
 - Single Coat Application
 - Easy Clean Up

KEY BENEFITS	
• Less worker fatigue	• Faster return to service
• Easy to control	• Easy reload
• One handed operation made easy	• No pot life concerns
• Lower intercoat porosity	• Minimum waste
• Lower risk of intercoat failure	• Precise mixing ratios

MeCaSpray Product Compatibility

The MeCaSpray Dispensing System is designed to work with MeCaFix, MecaWear and MeCaCorr cartridges as shown below, each containing a precise mix of Resin and Hardener. This ensures a consistent application and optimal performance from the coating. Its lightweight design and dual stage trigger enhance user control and operation, allowing for a smooth and even distribution of the coating material.

MECASPRAY COMPATIBLE PRODUCTS	PART NUMBER
MeCaFix 144	8630144-C
MeCaWear 306	8630306-C
MeCaWear 350	8630350-C
MeCaCorr 706	8630706-C
MeCaCorr 710	8630710-C
MeCaCorr 736	8630736-C
MeCaCorr 750	8630750-C
MeCaCorr 780	8630780-C



Equipment

Pneumatic Shaker

In under 5 minutes, this pneumatic shaker will mix MeCaTeC coatings in either a dual cartridge tube or one gallon can. The shaker requires 80 psi and 4.5 cfm to deliver product mixing. Lightweight and compact, it will ensure uniform product quality and proper dispersion of our high ceramic loaded products.



KEY BENEFITS

- Fast, thorough mixing assures uniform product quality and full cure
- Improves mix time, operator efficiency and safety



MeCaMixer

An extremely versatile piece of equipment for field or shop mixing of MeCaTeC ceramic based trowel compounds. Provides thorough and accurate batch mixing while improving operator safety, mixing time and manpower requirements. Simple to operate, completely portable, and easily adaptable to hundreds of uses. Rotating drum container is convenient, removable, easy to clean. Stationary mixing paddle provides both radial and axial action, scrapes sides and bottom of drum for complete mixing, removes for easy cleaning.

KEY BENEFITS

- Constant speed
- Positive drive gear head motor is standard
- Equipped with ON-OFF switch fuse protection
- 8-foot 3-wire cord with 3 prong grounded plug

Temperature Specifications

MECATEC PRODUCT LINE	MAX OPERATING TEMPERATURE WET	MAX OPERATING TEMPERATURE DRY
MeCaFix 50	-	250°F (121°C)
MeCaFix 100 Express	104°F (40°C)	120°F (48°C)
MeCaFix 120	122°F (50°C)	195°F (90°C)
MeCaFix 125	300°F (150°C)	480°F (250°C)
MeCaFix 130	176°F (80°C)	302°F (150°C)
MeCaFix 144	122°F (50°C)	180°F (82°C)
MeCaCorr 706	122°F (50°C)	190°F (90°C)
MeCaCorr 710	150°F (65°C)	212°F (100°C)
MeCaCorr 736	167°F (75°C)	300°F (150°C)
MeCaCorr 750	200°F (95°C)	300°F (150°C)
MeCaCorr 780	356°F (180°C)	470°F (243°C)
MeCaCorr 850	-	1200 °F (650°C)
MeCaWrap W4	-	250°F (120°C)
MeCaWrap K6	-	250°F (120°C)
MeCaPrime 10	-	-
MeCaWear 306	122°F (50°C)	195°F (90 °C)
MeCaWear 350	300°F (150°C)	518°F (270°C)
MeCaWear 400	122°F (50°C)	195°F (90°C)
MeCaWear 450	300°F (150°C)	518°F (270°C)
MeCaWear A5	122°F (50°C)	195°F (90°C)
MeCaWear A5FS	122°F (50°C)	195°F (90°C)
MeCaWear A5HT	140°F (60°C)	329°F (165°C)
MeCaWear A7	122°F (50°C)	195°F (90°C)
MeCaWear A7HT	167°F (75°C)	450°F (232°C)
MeCaBack 900	-	250°F (121°C)

Chemical Resistance	MeCaFix					MeCaWear			MeCaCorr			
	100	120	125	130	144	306 & 400	350 & 450	A5 /A7 Series	706	710	736 &750	780
ACETIC ACID, CONC	NR	S	R	S	NR	R	R	S	R	R	R	R
ACETIC ACID, DILUTE	S	S	R	R	S	R	R	S	R	R	R	R
ACETONE	NR	R	R	R	NR	R	R	R	R	R	R	R
AMMONIA	S	R	R	R	S	R	R	R	R	R	R	R
AMMONIUM CHLORIDE	R	R	R	R	R	R	R	R	R	R	R	R
AMMONIUM FLUORIDE	R	S	R	S	R	S	R	S	S	S	R	R
BENZENE	NR	S	R	S	NR	R	R	S	R	R	R	R
BLEACH	S	S	R	R	S	R	R	S	R	R	R	R
BORIC ACID	S	R	R	R	S	R	R	R	R	R	R	R
BRAKE FLUID	R	R	R	R	R	R	R	R	R	R	R	R
BROMINE WATER, SAT.	NR	R	R	R	NR	R	R	R	R	R	R	R
BROMINE, LIQUID OR GAS	NR	R	R	R	NR	S	R	R	S	S	R	R
CHLORINE, LIQUID OR GAS	NR	R	R	R	NR	R	R	R	R	R	R	R
CHROMIC ACID, CONC	NR	R	R	R	NR	R	R	R	R	R	R	R
CHROMIC ACID, DILUTE	NR	R	R	R	NR	R	R	R	R	R	R	R
CITRIC ACID, CONC	NR	R	R	R	NR	R	R	R	R	R	R	R
CITRIC ACID, DILUTE	NR	R	R	R	NR	R	R	R	R	R	R	R
CRESOL	S	R	R	R	S	R	R	R	R	R	R	R
ETHANOL	S	R	R	R	S	R	R	R	R	R	R	R
ETHYL ACETATE	R	R	R	R	R	R	R	R	R	R	R	R
ETHYLENE DICHLORIDE	NR	NR	NR	NR	NR	NR	NR	NR	NR	NR	NR	NR
FERRIC CHLORIDE	R	R	R	R	R	R	R	R	R	R	R	R
FERRIC SULPHATE	R	R	R	R	R	R	R	R	R	R	R	R
FLUOSILICIC ACID	NR	S	R	S	NR	S	R	S	S	S	R	R
FORMIC ACID	NR	R	R	R	NR	R	R	R	R	R	R	R
GASOLINE	R	R	R	R	R	R	R	R	R	R	R	R
HYDROCHLORIC ACID, CONC	NR	S	R	S	NR	S	R	S	S	S	R	R
HYDROCHLORIC ACID, DILUTE	S	R	R	R	S	R	R	R	R	R	R	R
HYDROFLUORIC ACID, CONC	NR	S	R	S	NR	S	R	S	S	S	S	R
HYDROFLUORIC ACID, DILUTE	S	R	R	R	S	R	R	R	R	R	R	R
HYDROGEN PEROXIDE	S	S	R	S	S	R	R	S	R	R	R	R
HYDROGEN SULPHIDE	R	R	R	R	R	R	R	R	R	R	R	R
ISOPROPYL ALCOHOL	R	R	R	R	R	R	R	R	R	R	R	R
KEROSENE	R	R	R	R	R	R	R	R	R	R	R	R
LACTIC ACID, CONC	NR	R	R	R	NR	R	R	R	R	R	R	R
LACTIC ACID, DILUTE	NR	R	R	R	NR	R	R	R	R	R	R	R
METHANOL	S	R	R	R	S	R	R	R	R	R	R	R
METHYL ETHYL KETONE	S	S	R	S	S	S	R	S	S	R	R	R
METHYLENE CHLORIDE	NR	NR	NR	NR	NR	NR	NR	NR	NR	NR	NR	NR
NAPHTHALENE	R	R	R	R	R	R	R	R	R	R	R	R
NICKEL SALTS	R	R	R	R	R	R	R	R	R	R	R	R
NITRIC ACID, CONC	NR	NR	NR	NR	NR	NR	NR	NR	NR	NR	NR	NR
NITRIC ACID, DILUTE	S	R	R	R	S	R	R	R	R	R	R	R
OLEIC ACID	S	R	R	R	S	R	R	R	R	R	R	R
OXALIC ACID	S	R	R	R	S	R	R	R	R	R	R	R
PHENOL	NR	NR	R	NR	NR	R	R	NR	R	R	R	R
PHOSPHORIC ACID, CONC	NR	NR	R	NR	NR	R	R	NR	R	R	R	R
PHOSPHORIC ACID, DILUTE	S	S	R	S	S	R	R	S	R	R	R	R
SODIUM BICARBONATE	R	R	R	R	R	R	R	R	R	R	R	R
SODIUM CHLORIDE	R	R	R	R	R	R	R	R	R	R	R	R
SULPHURIC ACID, CONC	NR	NR	R	NR	NR	NR	R	NR	NR	NR	R	R
SULPHURIC ACID, DILUTE	S	S	R	R	S	R	R	S	R	R	R	R
TOLUENE	S	S	R	S	S	R	R	S	R	R	R	R
TRICHLOROETHYLENE	S	S	S	S	S	S	S	S	S	S	S	S
TRISODIUM PHOSPHATE	R	R	R	R	R	R	R	R	R	R	R	R
UREA	R	R	R	R	R	R	R	R	R	R	R	R
URIC ACID	S	R	R	R	S	R	R	R	R	R	R	R
WATER, DEMINERALISED	R	R	R	R	R	R	R	R	R	R	R	R
WATER, SALT	R	R	R	R	R	R	R	R	R	R	R	R
XYLENE	S	S	R	S	S	R	R	S	R	R	R	R

R: Recommended for full exposure

S: Satisfactory for splash and spillage exposure

NR: Not recommended

Coverage Data



THEORETICAL COATING COVERAGE

Sq. ft. / US gal. = ((% solids by volume / 100) x 1604) / dry film thickness (mils)
Sq. meters / liter = ((% solids by volume) / 100) x 1000 / dry film thickness (microns)



CONSUMPTION RATE

Consumption = Area
(Sq. ft. or Sq. meters) / Coverage with Waste Factor



COVERAGE WITH WASTE FACTOR

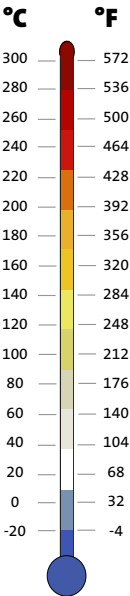
Coverage with Waste Factor =
Theoretical Coverage - (Theoretical Coverage x % Waste Factor) / 100

Conversion Tables

N	=	Newtons (1N = 1 kgm/s ²)
Pa	=	Pascals (1 Pa = 0.1 kg/m ²)
kPa	=	Kilopascals (1 KPa = 1000 Pa = 1 KN/m ²)
MPa	=	Megapascals (1 MPa = 1000 KPa = 1 million Pascals)
GPa	=	Gigapascals (1 GPa = 1000 MPa = 1 million KPa)

M	=	Meters
Kg	=	Kilograms
s	=	Seconds
PSI	=	Pounds per Square Inch

Examples: 1 PSI = 6.894757 KN/m² = 6.894757 KPa
To convert PSI to MPa, multiply PSI by 0.006894757. Ex: 120,000psi x 0.006894757 = 827.4 MPa
To convert MPa to PSI, divide by 0.006894757. Ex: 1000 MPa / 0.006894757 = 145,038 PSI



TO CONVERT LENGTH

From mils to microns = 25.4
From microns to mils = 0.04
From centimeters to inches = 0.3937
From inches to centimeters = 2.54
From centimeters to feet = 0.03281
From feet to centimeters = 30.48
From feet to meters = 0.3048

TO CONVERT AREA

From sq. ft. to sq. meters = 0.0929
From sq. meters to sq. ft. = 10.764

AREA CALCULATIONS

Rectangle = Length x Width
Circle = 3.1416 x Radius x Radius
Pipe = 3.1416 x Diameter x Length
Cylindrical Tank with Floor and Roof = 3.1416 x Diameter x Length + 2 x (3.1416 x Radius x Radius)
Open Top Cylindrical Tank with Floor = 3.1416 x Diameter x Length + (3.1416 x Radius x Radius)



*Pioneering
Industrial Sustainability*



Your resource for protection, repair and joining solutions

Statement of Liability: Due to variations inherent in specific applications, the technical information contained herein, including any information as to suggested product applications or results, is presented without representation or warranty, expressed or implied. Without limitation, there are no warranties of merchantability or of fitness for a particular purpose. Each process and application must be fully evaluated by the user in all respects, including suitability, compliance with applicable law and non-infringement of the rights of others, and Castolin Eutectic and its affiliates shall have no liability in respect thereof.

www.castolin.com

www.eutectic.com