

Maximum wear protection with low material thicknesses

CastoDur Diamond Plate[®] LC8



CDP LC8
LASERCLAD

CDP
LASERCLAD

WEAR PLATES



- Ultimate wear resistance against erosion and abrasion using 60% Tungsten Carbide
- Good formability and wide range of installation possibilities
- Uniform distribution of carbides, low dilution and low carbide dissolution
- Flexible sizes and thicknesses



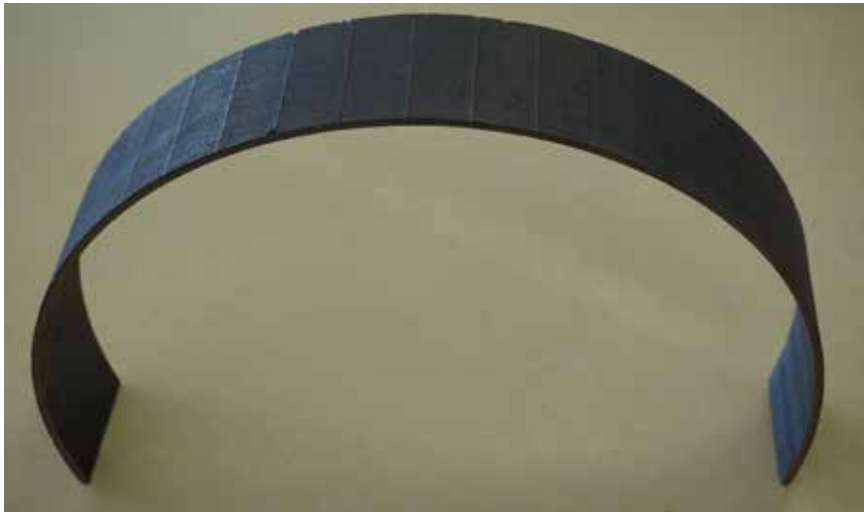
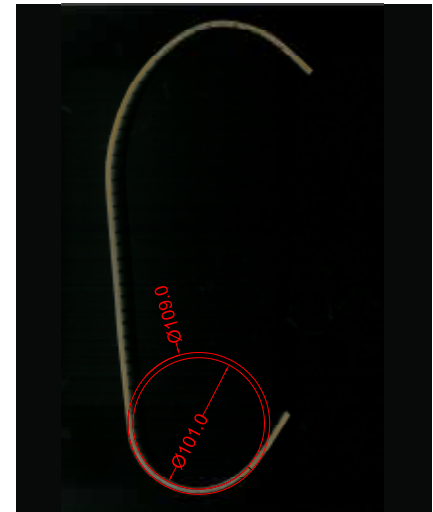


Plate 3+1mm rolled, welding beads across rolling direction outside
Cracking may occur, but no spalling. Smallest diameter 400 mm possible

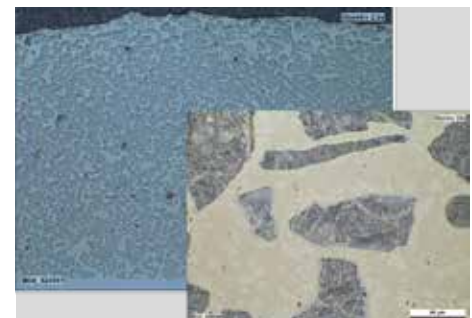


Minimum inside diameter $D_i=100\text{mm}$

Cool Castolin Eutectic LaserClad™ Technology

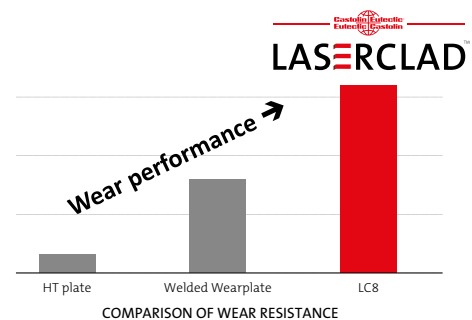
Due to its low temperature, focused beam, laser technology has proved to be extremely effective for protecting parts exposed to high wear. Advantages over hardfacing techniques, such as welding, include:

- As dilution is minimal and can be perfectly controlled, the properties of high-quality coating materials are not appreciably affected during application.
- The tungsten carbides that provide protection against abrasion and erosion do not dissolve. The carbides are perfectly embedded in the matrix, plus the layers exhibit increased impact resistance.
- Of all coating processes, the LaserClad technology has the lowest influence on base material properties.
- The uniform coating thickness allows for small tolerances and ensures that less turbulences are generated on the coated surface.



Wear Performance

CastoDur Diamond Plate® LC8 is a thin steel plate coated with a highly wear-resistant layer. The very high density of ultra-hard Tungsten Carbide phases homogeneously distributed into a nickel-based matrix offer an extreme resistance up to 10 times better than standard heat treated (HT) wearplates. Consequently, similar or even superior life-times over traditional thick and heavy wearplates.



Easy to handle

CastoDur Diamond Plate® LC8 can be handled manually by operators. It is ideal where lifting devices cannot be installed, in particular inside restricted areas.



Thin formable and smooth

CastoDur Diamond Plate® LC8 is for lining the inside of equipment, in particular where space is either limited or the geometry of the machine must not be altered.



Thinner, lightweight, minimum dilution

Minimale Abplatzung innengekantet, 90°

CastoDur Diamond Plate LC8® plate size:

Light

The low weight of the CastoDur Diamond Plate® LC8 allows important mass reduction from moving parts. Consequently, ancillary equipment is exposed to lower mechanical stress and maintenance can be reduced.

SUBSTRATE THICKNESS (mm)	COATING THICKNESS (mm)	PLATE SIZE	USABLE AREA	PLATE WEIGHT (Kg)	ESC CODE
3	1	1000 x 1000 mm	980 x 980 mm	35	762209
4	1,5	1000 x 1000 mm	980 x 980 mm	48	762207
3	1	2000 x 1000 mm	1960 x 980 mm	70	762208
4	1,5	2000 x 1000 mm	1960 x 980 mm	96	762206