



CastoTube®

Seamless, Internally Wearfaced Pipe



- Protection against abrasion and erosion
- Produced using advanced wear resistant alloys
- Easy to join by welding or mechanical means
- Cost effective for rapid replacement of worn pipe
- Custom cutting, elbows and joints available

CastoTube® Advantages

CastoTube® anti-wear solutions for pipe, are seamless, easy to weld, mild steel, tubes which have been internally wearfaced with wear resistant alloys.

By avoiding expensive forming operations of flat plates into tubes, CastoTube® offers many advantages:

- Very cost effective when compared to rolled plate
- Seamless - absence of wear-prone linear weld joints
- Exceptional wear resistance
- Round cross section, spiral welding minimizes distortion
- Easy-to-join by welding or mechanical means
- Available from 4" up to 24" I.D.



The Eutectic Difference

- Ultra-hard phases anchored in a tough matrix to combat severe abrasion.
- Hardness that's typically 2-3 times higher than the most abrasive media found in industrial processes.
- Uniform hardness throughout the coating.
- Controlled cooling produces strongly oriented hard phases for maximum wear resistance.
- Available in straight pipe or custom configurations such as elbows, reducers, Y's and other shapes.

Controlled cooling during the manufacturing process produces densely dispersed hard phases. These are strongly oriented to provide superior wear resistance when compared to conventional weld coatings.

Eutectic Engineering Solving Complex Wear Problems

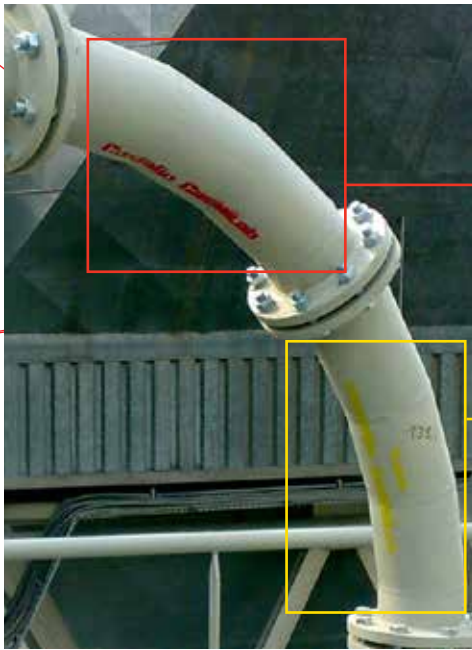
Wear rate increases dramatically in elbows due to the change in speed and direction of particles. Often straight pipe segments remain in good condition while elbows wear out prematurely. The biggest engineering challenge is creating uniform wear throughout the system.

Eutectic will engineer a solution...

- Pipe segments with different wear resistant alloys.
- Combination of metal and polymer coatings.
- Increased segments to improve particle flow and smoothness of the pipe radius.
- Wearface each joint internally to improve wear resistance.



CastoTube® elbow reinforced with MeCaTec® polymer coatings

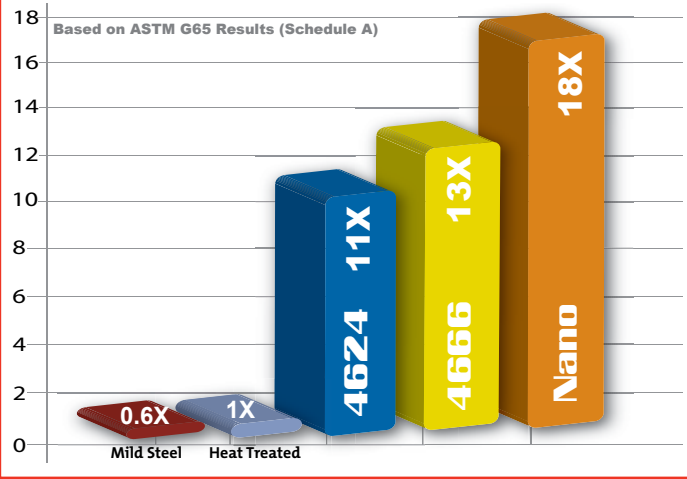


CastoTube® for extreme abrasion

CastoTube® for severe abrasion

Multi-alloy CastoTube® for increased wear resistance

EXTEND SERVICE LIFE WITH EUTECTIC ALLOYS



CastoTube® Selector

ALLOY	DESCRIPTION	WEAR PERFORMANCE G65*	HARDNESS	DIAMETER
Nano	EXTREME ABRASION EROSION RESISTANCE Complex alloy matrix with WC micro granules spread throughout	13 mm ³	68-71 HRC	4" to 24"
4666	SEVERE ABRASION EROSION RESISTANCE Complex carbides and borides	17 mm ³	61-65 HRC	
4624	HIGH ABRASION EROSION RESISTANCE Premium CrC alloy	21 mm ³	55-59 HRC	

*ASTM G-65 is a standard test method for measuring abrasion based on average volume loss in mm³.

Typical Applications



Eutectic offers a comprehensive range of solutions for virtually all wear-intensive tube systems in industries like..

- Mines and quarries
- Sand and gravel pits
- Shredders and recycling plants
- Iron and steel mills
- Cement and ready-mix concrete plants
- Brickworks
- Foundries and coking plants
- Incineration plants and electric power stations



YOUR RESOURCE FOR PROTECTION, REPAIR AND JOINING SOLUTIONS



EUTECTIC CORPORATION
N94 W14355 Garwin Mace Drive
Menomonee Falls, WI 53051 USA
Tel.: +1 (800) 558-8524
eutectic.com

EUTECTIC CANADA
428, rue Aimé-Vincent
Vaudreuil-Dorion, Québec
J7V 5V5 Canada
Tel.: +1 (800) 361-9439
eutectic.ca



Statement of Liability: Due to variations inherent in specific applications, the technical information contained herein, including any information as to suggested product applications or results, is presented without representation or warranty, expressed or implied. Without limitation, there are no warranties of merchantability or of fitness for a particular purpose. Each process and application must be fully evaluated by the user in all respects, including suitability, compliance with applicable law and non-infringement of the rights of others, and Eutectic Canada and its affiliates shall have no liability in respect thereof.

CastoTube Aug-2020 © 2008, Eutectic Canada, © Reg. T.M., Printed in Canada.

www.castolin.com

www.eutectic.ca