

CastoDur Diamond Plates
Active protection against abrasion and erosion

CDP XuperWave 4624 DXW



- Reduces maintenance costs through better and longer service life of parts exposed to abrasion and erosion
- Reduces wear rate with its Castolin Eutectic XuperWave pattern and its rich chromium carbide structure
- Offers the right balance between price and performance for all your everyday applications
- Conserves resources and protects the environment

WEAR PLATES



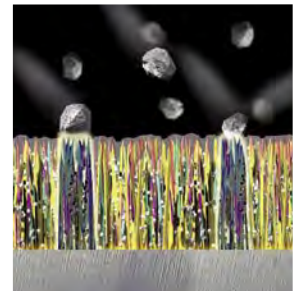


Castolin Eutectic, your best partner to reduce maintenance costs

With more than 100 years experience in welding and wear protection, Castolin Eutectic is the manufacturer of the widest range of wearplates today on the market, in terms of base materials, sizes, coating alloys and welding processes adopted. From simple Chromium Carbide rich overlays, applied in open arc, to sophisticated NiCrBSi powders additioned with Tungsten Carbides and fused in a vacuum furnace or by means of Plasma Transferred Arc, we have developed a wide choice of products.

You deserve the best plates, we manufacture them

The Castolin Eutectic manufacturing accuracy, the specific welding procedure and equipment promote a better orientation of hard phases within the alloy during solidification, ensuring an additional protection of the surface and a stronger bonding between carbides and matrix.



CDP XuperWave 4624

CDP XuperWave 4624 is the ideal wearplate for applications where the right balance between price and service life is required, thus maintaining the Castolin high standard welding quality and smooth surface. The exclusive XuperWave weld bead pattern drastically reduces the wear rate, especially in applications exposed to high velocity erodent fluxes. The extreme hard weld clad surface is specially designed for erosion and abrasion applications.



- Dimensions: 1.500 x 3.000mm (1.220 x 2.740mm coated, 3,34 m2)
- Base material: mild steel – other metals available on request
- Type of wearfacing: Chromium carbide rich alloy
- Hardness of the weld clad surface: 58 – 60 HRC
- Carbide content: > 30%
- Max operating temperature: 250°C

Available versions (other sizes available on request):

4624 DXW Coated on one side with a single layer of wearfacing alloy:

	Base material (mm)	Wearfacing (mm)
CDP 4624 DP and DXW 0503	5	3
CDP 4624 DP and DXW 0604	6	4
CDP 4624 DP and DXW 0804	8	4
CDP 4624 DP and DXW 0805	8	5
CDP 4624 DP and DXW 1005	10	5
CDP 4624 DP and DXW 1505	15	5

Always close to you

On field experience clearly shows that every application requires a tailor made solution, let our representatives advise you about the CDP that fits the best your needs and suggest the best procedures for cutting, bending, joining and fixing wearplates.

Your resource for protection, repair and joining solutions

Statement of Liability: Due to variations inherent in specific applications, the technical information contained herein, including any information as to suggested product applications or results, is presented without representation or warranty, expressed or implied. Without limitation, there are no warranties of merchantability or of fitness for a particular purpose. Each process and application must be fully evaluated by the user in all respects, including suitability, compliance with applicable law and non-infringement of the rights of others, and Messer Eutectic Castolin and its affiliates shall have no liability in respect thereof.

