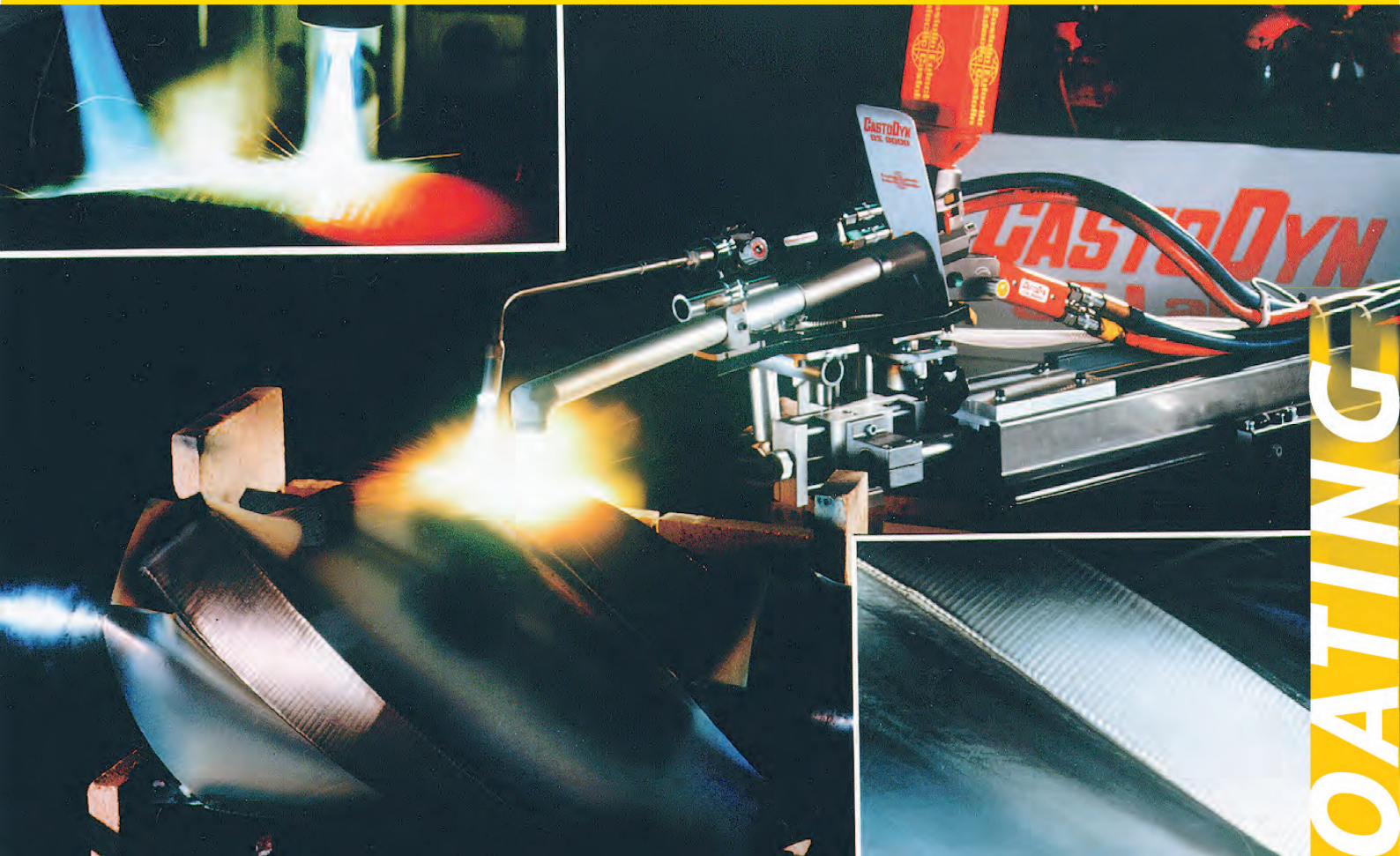


Simultaneous fusion attachment  
for the CDS 8000 thermal spray system

# CASTODYN® SF Lance



COATING

- Increased energy output for highest deposition rates
- Advanced nozzle design delivers exceptional yield (>90 %)
- Synergy between special Eutalloy® SF powders and SF Lance gives extremely durable anti-abrasion coatings

Castolin Eutectic®  
Eutectic Castolin

# CASTODYN® SF Lance

Castolin Eutectic's modular CDS 8000 torch performs more flame spraying processes, with more alloy powder types than any other comparable system. The CastoDyn SF Lance kit increases this already-wide range of applications by allowing the CDS 8000 to perform spraying with simultaneous fusion. Its robust, water-cooled design permits sustained high-intensity spraying, and is ideal for both automated and manual applications.

The kit's two Standard Spray Modules (SSM 50 and SSM 51) offer different flame powers, so workplaces of any mass or thickness can be coated.



## Technical data

Standard Spray Module	SSM 50	SSM 51	SSM 52 optional
Deposition rate	4-9 kg/h	2-4 kg/h	1-2 kg/h
Typical yield	>90 %	>90 %	>90 %
Oxygen flow rate	2000 NI/h	1000 NI/h	500 NI/h
Flame power	~ 28 KW	~ 14 KW	~ 7 KW
Deposit thickness (one pass)	1-3 mm	0,8-2,5 mm	0,8-2 mm

## Eutalloy SF Powders tailored for the CastoDyn SF Lance.

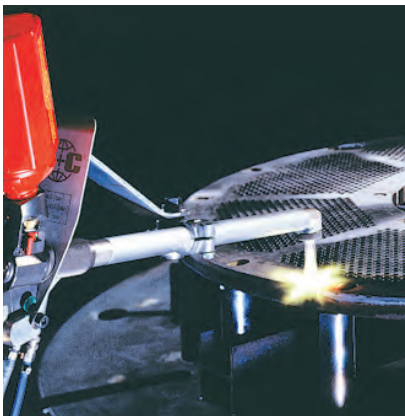
The composition and granulometry of Eutalloy SF powders are tailored to the precise needs of the SF Lance system, to ensure the highest possible yield with a high deposition rate, deposit quality and ease of application.

All the Eutalloy SF powders are self-fluxing nickel based powders. They have, by their very nature, excellent corrosion resistance. To cater for a wide range of applications, different customer requirements and types of machining, the Eutalloy SF family covers a wide range of hardnesses and resistances to wear, starting with the easy machinable 35 HRC type PE 8235, applicable for porosity-free thick build-ups and extending to the highly abrasion-resistant SF 15211.

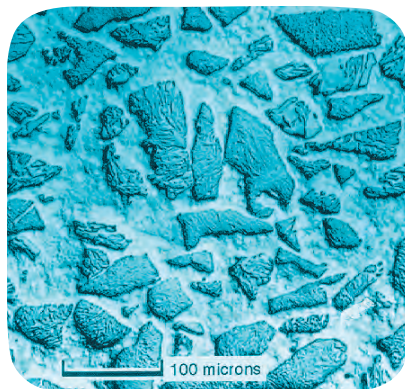
## Cost-cutting industrial applications

The CastoDyn SF Lance/Eutalloy SF combination is a uniquely cost-effective solution for companies with major abrasion problems, such as manufacturers and users of equipment for these activities:

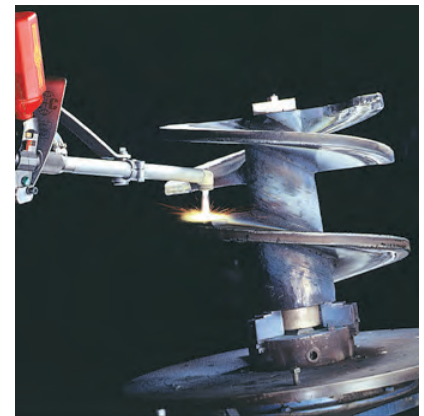
- AGRICULTURE
- BRICK- AND CEMENT-MAKING
- CIVIL ENGINEERING FOUNDRIES
- QUARRYING MINING
- PULP AND PAPER MANUFACTURE
- GLASSWORKS



Coating a hydropulper (paper mills) with Eutalloy SF 15211.



Densely packed hard phases bound in the matrix form an impenetrable barrier to abrasive particles (microphoto).



Coating a brick-mould screw with Eutalloy SF 15211 anti-abrasion alloy.

The above product technical properties are based on Castolin Eutectic quality assurance standards and procedures for use. Procedures and applications other than those specified may alter these properties.

## YOUR RESOURCE FOR PROTECTION, REPAIR AND JOINING SOLUTIONS



Part of the Messer World

**Castolin Eutectic Int. S.A.**  
Ch. de la Venoge 7  
CH-1025 St-Sulpice  
Switzerland

Tel : +41 21 694 11 11  
Fax : +41 21 694 11 70  
contact@castolin.com  
> [www.castolin.com](http://www.castolin.com)  
> [www.eutectic.com](http://www.eutectic.com)