

A High Performance Tungsten Carbide Wear Plate

# CastoDur® Diamond Plate 6503



## WEAR PLATES

- Maximum Tungsten Carbide concentration
- Nickel-enhanced matrix for improved corrosion resistance
- Metallurgical interface bond for maximized adhesion
- High quality automated Plasma Transferred Arc (PTA) deposit



## DESCRIPTION:

CDP 6503 is manufactured in 4' x 4' plates that can be cut to size, formed or rolled into shapes suitable for the widest range of end uses. Plates can be welded, bolted, back-studded and/or plug welded depending on the end use installation.

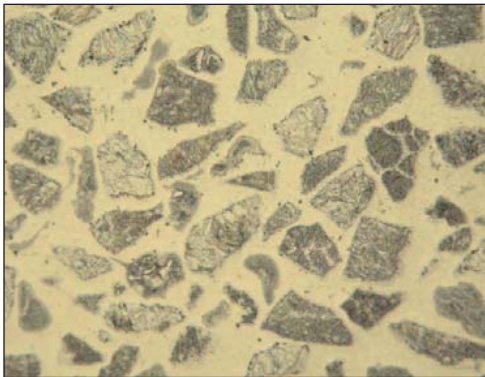
## TECHNICAL DATA:

Overall Thickness	Base	Overlay	Approx. Wt. per sq/ft
5/16" (7mm)	5mm	2mm	12.8 lb.
3/8" (9mm)	6mm	3mm	16.5 lb.

**STANDARD SIZE:** 48" (approx. 122 cm) x 48" (approx. 122 cm) (4' x 4')

## OVERLAY PROPERTIES:

Nominal Hardness: HRC 61 - 65  
Microhardness: DPH 2400-2500  
Macrohardness: HRC 61 - 65  
Max Service Temperature: 1000° F (approx. 538°C)  
Overall Wear Plate Density: 0.296 lb/in<sup>3</sup>  
ASTM G65 Wear Test Results: 14-mm<sup>3</sup>  
Typ. Analysis with Principal Elements: NiBSi + WC-W<sub>2</sub>C



Note the carbide size and maximized carbide concentration for enhanced wear resistance and improved toughness.

## WELDING INFORMATION:

CDP 6503 premium wear plates are easily welded using Eutectic alloys:

### SMAW (Electrode)

	Joining Electrode	Coating Repairs
Mild Steels	EutecTrode® 66 EutecTrode® 66XHD	1st Ultimum 112 2nd AbraTec® 6715XHD 3rd AbraTec® 6710XHD
Alloy steels	EutecTrode® 680 Xuper® 6868 XHD	

### GMAW (Wire)

	Joining Wire	Coating Repairs
Mild Steels	EnDOtec® DO*66	1st EnDOtec® DO*11 2nd M56FW
Alloy steels	EnDOtec® DO*68S EnDOtec® DO*29S	

### Eutalloy® (Spray Process)

	Joining Wire	Coating Repairs
Mild Steels	NA	Super Jet® Torch with TungTec®
Alloy steels	NA	10112 Powder

## TYPICAL APPLICATIONS:

Cement: Fan Blades, Deflector Blades and Roller Mill Classifiers

Utilities: Exhauster Blades & Classifiers, Boiler Ducts and Burners

Pulp & Paper: Chipper Housings, Chip Blowers and Hog Housing Liners

Oil Sand Mining: Feed Aprons & Chutes, Haul Trucks, Skid Pads and Runners

Recyclers: Wear Guides, Deflectors, Holding Bins and Hoppers

YOUR RESOURCE FOR PROTECTION, REPAIR AND JOINING SOLUTIONS



**Eutectic Corporation**  
N94 W14355 Garwin Mace Drive  
Menomonee Falls, WI 53051 USA  
P 800-558-8524 • F 262-255-5542  
[www.eutectic.com](http://www.eutectic.com)

**Eutectic Services**  
12300 Carmen Avenue  
Milwaukee, WI 53225 USA  
P 800-558-8524 • F 262-255-5542



Statement of Liability: Due to variations inherent in specific applications, the technical information contained herein, including any information as to suggested product applications or results, is presented without representation or warranty, expressed or implied. Without limitation, there are no warranties of merchantability or of fitness for a particular purpose. Each process and application must be fully evaluated by the user in all respects, including suitability, compliance with applicable law and non-infringement of the rights of others, and Eutectic Corporation and its affiliates shall have no liability in respect thereof.

6503 1-15 © 2008, Eutectic Corporation, © Reg. T.M., Printed in the U.S.A.