

Laser Clad, Tungsten Carbide, Wear Plate

CastoDur Diamond Plate[®] LC8

CDP LC8
LASERCLAD



WEAR PLATES

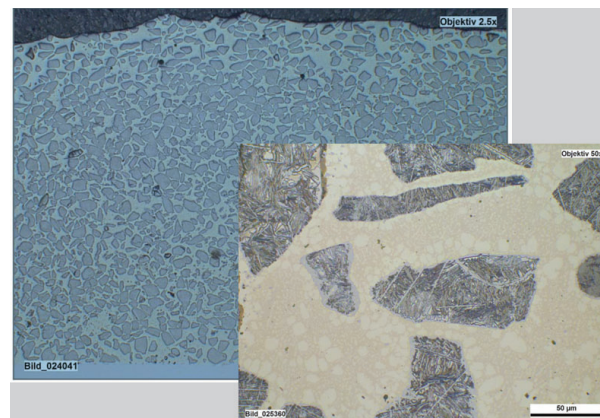
- Ultimate wear resistance against erosion and abrasion using 60% Tungsten Carbide
- For reducing weight of moving parts working at high speed
- Lightweight for easy handling
- Flexible sizes and thicknesses



Cool Castolin Eutectic LaserClad™ Technology

Due to its low temperature, focused beam, laser technology has proved to be extremely effective for protecting parts exposed to high wear. Advantages over hardfacing techniques, such as welding, include:

- very low dilution which keeps the intrinsic wear-properties unaltered.
- low dissolution of the wear-resistant Tungsten Carbides into the matrix to improve bonding and impact resistance.
- limited substrate deformation for easy installation and better wear resistance.
- lowest influence on base material properties of all coating processes.
- smooth and regular coating surface for improved wear and tolerances.



Wear Performance

LC8 is a thin steel plate coated with a highly wear-resistant layer. The very high density of ultra-hard Tungsten Carbide phases homogeneously distributed into a nickel-based matrix offer an extreme resistance up to 10 times better than standard heat treated (HT) wearplates. Consequently, similar or even superior life-times over traditional thick and heavy wearplates.

Easy to handle

CastoDur Diamond Plate LC8 can be handled manually by operators. It is ideal where lifting devices cannot be installed, in particular inside restricted areas.

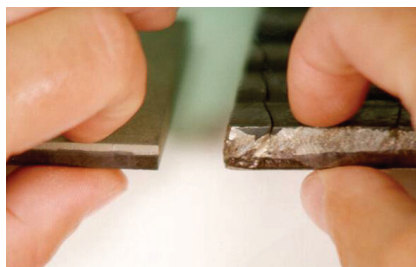
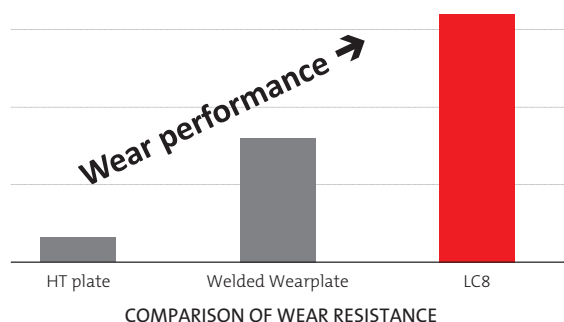
Thin formable and smooth

LC8 is an excellent choice for lining the inside of equipment, in particular where space is either limited or the geometry of the machine must not be altered.

Light

The low weight of LC8 allows important mass reduction from moving parts. Consequently, ancillary equipment is exposed to lower mechanical stress and maintenance can be reduced.

Castolin Eutectic
LASERCLAD™



LC8 PLATE SIZE:

BASE METAL THICKNESS	COATING THICKNESS	PLATE SIZE	USABLE AREA	PLATE WEIGHT LB.
0.12"	0.04"	39.5" x 39.5"	38.5" x 38.5"	77
0.16"	0.06"	39.5" x 39.5"	38.5" x 38.5"	106
0.12"	0.04"	78.75" x 39.5"	77" x 38.5"	154
0.16"	0.06"	78.75" x 39.5"	77" x 38.5"	212

YOUR RESOURCE FOR PROTECTION, REPAIR AND JOINING SOLUTIONS



EUTECTIC CORPORATION
N94 W14355 Garwin Mace Drive
Menomonee Falls, WI 53051 USA
Tel.: +1 (800) 558-8524
eutectic.com

EUTECTIC CANADA
428, rue Aimé-Vincent
Vaudreuil-Dorion, Québec
J7V 5V5 Canada
Tel.: +1 (800) 361-9439
eutectic.ca



Statement of Liability: Due to variations inherent in specific applications, the technical information contained herein, including any information as to suggested product applications or results, is presented without representation or warranty, expressed or implied. Without limitation, there are no warranties of merchantability or of fitness for a particular purpose. Each process and application must be fully evaluated by the user in all respects, including suitability, compliance with applicable law and non-infringement of the rights of others, and Eutectic Corporation and its affiliates shall have no liability in respect thereof.

LC8 06/17 © 2008, Eutectic Corporation, © Reg. T.M., Printed in the U.S.A.