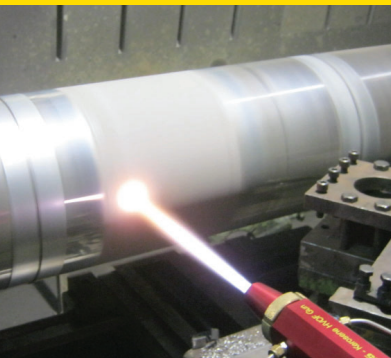


**Tungsten Carbide, Cobalt and Chromium Alloy Specially  
Made for Thermal Spraying**

# **TeroJet<sup>®</sup> 55 586**



## **COATING**

- Ideal for use with High Velocity Oxy-Fuel equipment
- High bond strength with a variety of base metals
- Exceptional resistances to low stress abrasion, fretting wear and erosion/corrosion
- Chromium content improves resistance to corrosion and increases thermal stability



## DESCRIPTION:

TeroJet 55 586 is an agglomerated and sintered Tungsten Carbide-Cobalt-Chromium powder designed specifically for thermal spraying. Optimum coating results will be achieved via HVOF. However, 55 586 powder may also be applied using high energy, low velocity combustion or plasma NTA systems. The HVOF coatings produced are hard, dense and will exhibit high bond strengths to a wide variety of base metals. Exceptional resistances to low stress abrasion, fretting wear and erosion/corrosion can be expected. Further, the addition of chromium to the matrix improves resistance to corrosion and increases thermal stability as compared to conventional WC-12Co or WC-17Co powders.

## TECHNICAL DATA:

### Powder Properties:

Nominal Composition: Tungsten Carbide  
Cobalt  
Chromium

Bulk Density: 4.5-5.5 g/cc

### Coating Properties:

Micro Hardness: 1000-1400 DPH 100g

Hardness / R15N: 90-93 (HRC 59-67 converted)

Bond Strength: >10,000 psi (ASTM C633)

Porosity: < 2 %

Coating Density: 14.0 g/cc

Service Temperature: 1148° F / 620° C (Max)

As-Sprayed Roughness: 175 micro-inches AA

As-Ground Roughness: < 10 micro-inches AA

As-Ground and Lapped: < 5 micro-inches AA

Wear Resistance: 7-10 x 10<sup>-3</sup> mm<sup>3</sup> Volume Loss  
(ASTM G65, Sch. A)

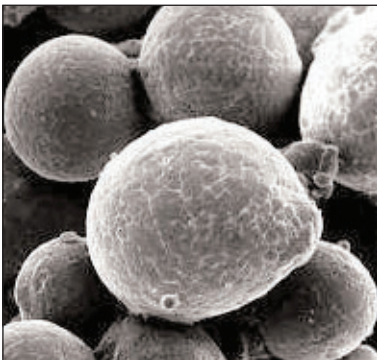


Photo-micrograph shows a dense coating with a high volume percent of uniformly distributed, discrete tungsten carbide particles.

## PROCEDURE FOR USE:

### Finishing Procedure:

Coatings of 55 586 may be finished by grinding using diamond wheels or belts with flood coolant. Follow the tool manufacturer's recommendations for speeds and feeds.

## APPLICATIONS:

- Compressor Shafts
- Oil Field Apparatus
- Pump Seals
- Impellers
- Induced Draft Fan Blades
- Paper Rolls
- Splined and bearing mandrels

## YOUR RESOURCE FOR PROTECTION, REPAIR AND JOINING SOLUTIONS



### EUTECTIC CORPORATION

N94 W14355 Garwin Mace Drive  
Menomonee Falls, WI 53051 USA  
Tel.: +1 (800) 558-8524  
eutectic.com

### EUTECTIC CANADA

428, rue Aimé-Vincent  
Vaudreuil-Dorion, Québec  
J7V 5V5 Canada  
Tel.: +1 (800) 361-9439  
eutectic.ca

