



CDP[®] 4623i

CastoDur Diamond Plates[®]



- Offers the best protection against combined wear by impact and mild abrasion
- Resists impact where standard wearplates fail
- Improves service life of parts such as buckets, chutes, conveyors and any other

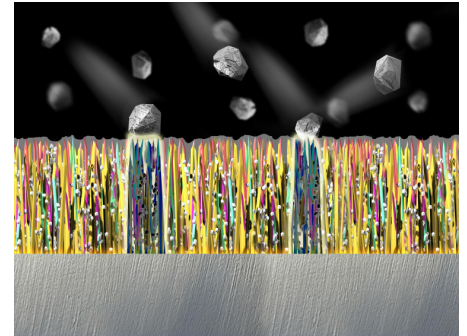
Castolin Eutectic, your best partner to reduce maintenance costs

With more than 100 years experience in welding and wear protection, Castolin Eutectic is the manufacturer of the widest range of wearplates today on the market, in terms of base materials, sizes, coating alloys and welding processes adopted.

From simple Chromium Carbide rich overlays, applied in open arc, to sophisticated NiCrBSi powders additioned with Tungsten Carbides and fused in a vacuum furnace or by means of Plasma Transferred Arc, we have developed a wide choice of products.

Manufacturing

The Castolin Eutectic manufacturing accuracy, the specific welding procedure and equipment promote a better orientation of hard phases within the alloy during solidification, ensuring an additional protection of the surface and a stronger bonding between carbides and matrix.



CDP® 4623i

CDP® 4623i is the High Load impact wearplate. The tough martensitic matrix contains complex carbides that are finely and homogeneously dispersed. This specific crystallographic structure allows the CDP® 4623i to withstand extreme conditions of impacts even when mild abrasion is present. This product is suitable for chutes, buckets, crushers and any other application with impacts.

- **Dimensions:** 1.500 x 3.000mm (1.220 x 2.740mm coated, 3,34 m²)
- **Base material:** mild steel
- **Type of wearfacing:** chromium carbide, titanium carbide
- **Hardness of the weld clad surface:** 54 HRC
- **Max operating temperature:** 300°C

Designation	Base material [mm]	Wearfacing [mm]
CDP® 4623i 0805	8	4
CDP® 4623i 1207	12	7
CDP® 4623i 1005	10	5

